



FIRE-SAFETY SLEEVES

■ INVAMAT 900 FIRE-SAFETY SLEEVES

INVAMAT 900 is a fire-safety sleeve (cuff) that meets the requirements of GOST, ETAG, BS and UL organizations and approved by FM system, to form fire and smoke protection around installed pipe passages.

APPLICATION:

The fire-safety sleeve is designed to simplify fire protection of combustible pipes laid in walls and floors with an established fire resistance limit.

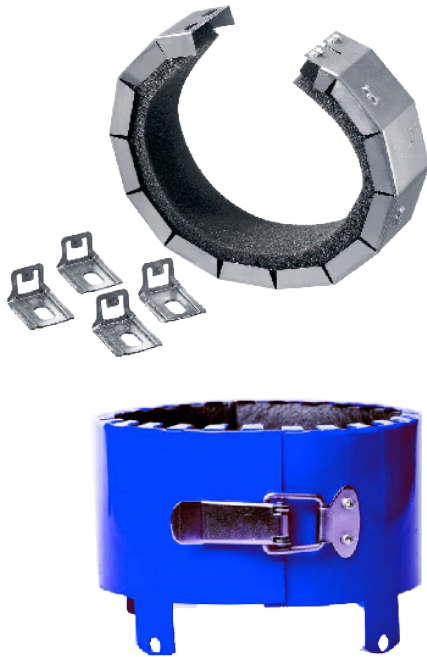
Applicable to plastic pipes with a diameter of 16-250 mm

FEATURES:

- Snapping mechanism for a quick and easy lock;
- Flexible hook position for easy fastening;
- Dismantling availability;

PACKAGE:

Corrugated box (20 pcs.)



SPECIFICATIONS:

Base materials	Concrete, drywall, brickwork
Pipe diameter range	16-250 mm
Expansibility factor	1:17
Expansion	140 °C
Can be painted	No